



Kawasaki Z 750 (2004)

Slip-On SP Series Exhaust System

Akrapovic Slip-On SP Series Exhaust System

for the Kawasaki Z 750 (2004)

The Akrapovic SLIP-ON SP series is a new addition to our product range. The attributes of the Akrapovic system work exceptionally well with the Kawasaki Z 750, making it a great combination of price, performance (107 HP) and quality materials. The system is made of high-quality stainless steel and titanium (muffler outer sleeve). A further feature of Akrapovic SP series exhaust systems is that they are officially approved for street use.

PERFORMANCE

Measurements of the Akrapovic SLIP-ON SP SERIES system on the Kawasaki Z 750 (without noise damper):

Power: the linear rise of the power curve and the increased power from 4800 rpm on indicate the excellent design of the Akrapovic system. The Kawasaki engine can really breathe, delivering 107 HP to the rear wheel at 11300 rpm. Torque: the Akrapovic SLIP-ON is even better when it comes to torque. It fills the drop-outs at around 3200 rpm and 6000 rpm beautifully, smoothing out the engine's operation. Torque is increased from 3000 rpm on and continues throughout the entire torque curve, making the engine even more responsive.

CONFIGURATION

SP series exhaust systems are made of high-quality stainless steel. The system is composed of a cylindrical stainless steel link pipe, connected on both sides to the other elements of the system (collector + muffler) with free-floating joints, which are secured using silicon-shielded tensioning springs. The muffler is also made entirely of stainless steel except for the outer sleeve, which is titanium. The muffler has a built-in noise damper, and therefore conforms to regulations for street use. The muffler is attached to the bike using the familiar Akrapovic Road carbon-fiber clamp.

	PERFORMANCE		
	stock	AKRAPOVIC	max. increased power
max. rear wheel power HP / rpm (measured on SuperFlow Cycle Dyn)	104.3 / 11000	107 / 11300	7.4 / 11800

	CONFIGURATION		
	header tubes	collector	link pipe
material	-	-	STAINLESS STEEL
tube shape	-	-	CYLINDRICAL

interference crossover tubes	-	lambda sensor	-
header tube inner sleeves	-	header tube flanges	-
header tubes - collector connection	-	collector / header tube - link pipe connection	FREE-FLOATING + SILICON SHIELDED SPRING + METAL CLAMP
link pipe - muffler connection	FREE-FLOATING + SILICON SHIELDED SPRING	muffler inlet cap / outlet cap	STAINLESS STEEL / STAINLESS STEEL
muffler metal interior	STAINLESS STEEL	muffler outer sleeve	TITANIUM
muffler clamp	CARBON-FIBER ROAD	muffler bracket	-
noise damper	HOMOLOGATED	heat shield	-

OPTIONS				
link pipe	noise damper	muffler outer sleeve	muffler bracket	heat shield
-	-	-	-	-

	ADDITIONAL DATA				
	stock	AKRAPOVIC		difference	
		S.S. link pipe	TITANIUM link pipe	stock - S.S.	stock - titanium
weight comparison (kg)	6.1	2.73	-	3.37	-
noise measurements (dB / rpm)	stock		AKRAPOVIC		
	92 / 5500		92 / 5500		
possibility of periodic service without removing A.E.S.	oil		oil filter		
	YES		YES		
legal for street use	YES				

Technical specifications of Akrapovic exhaust systems and related products subject to change without notice.

Akrapovic Slip-On SP Series Exhaust System for the Kawasaki Z 750 (2004)



CARBON-FIBER
MUFFLER CLAMP

Road
Program



Akrapovic Slip-On SP Series Exhaust System for the Kawasaki Z 750 (2004)



Akrapovic Exhaust System Technology copyright 2004, all rights reserved

Road
Program

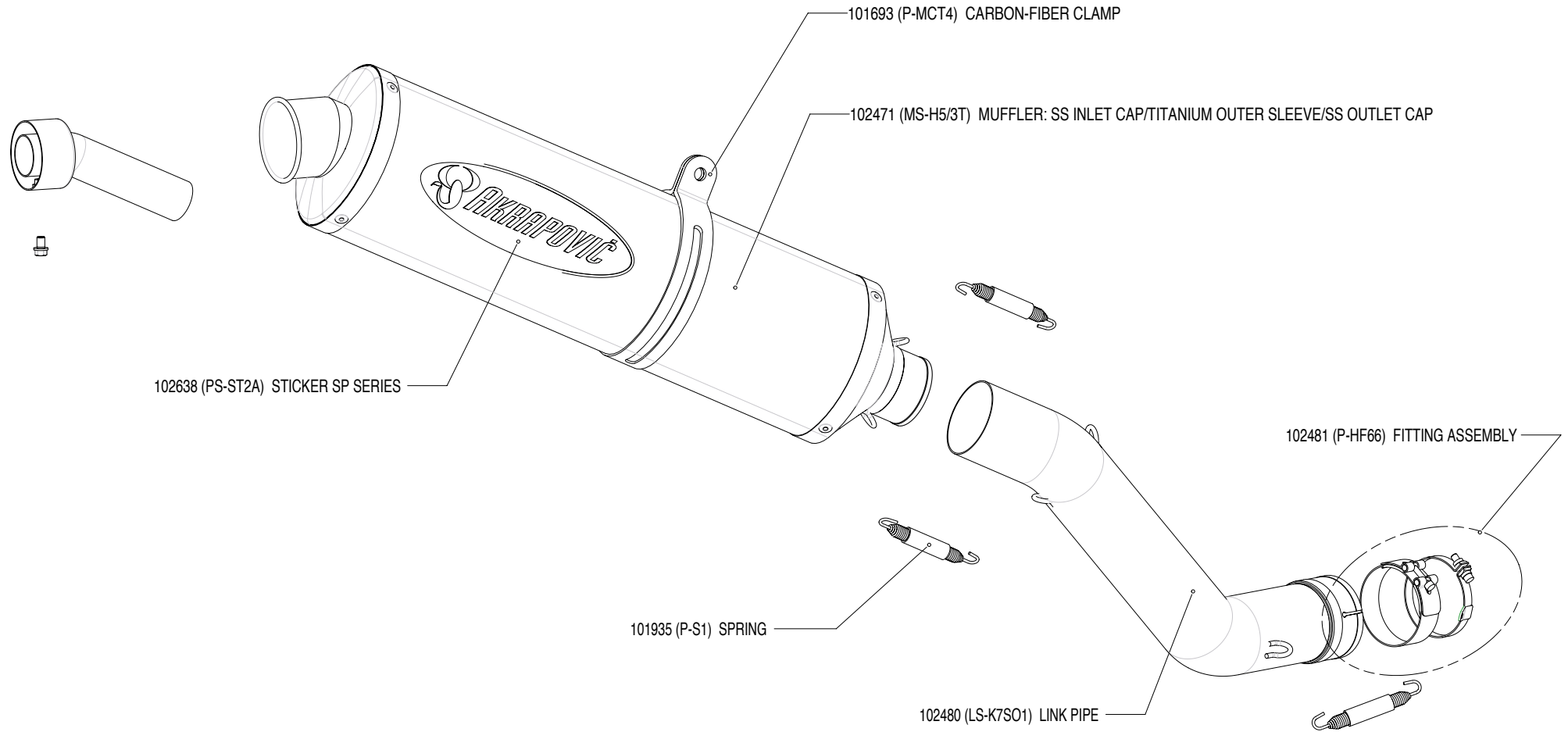
Akrapovic Slip-On SP Series Exhaust System for the Kawasaki Z 750 (2004)



Akrapovic Exhaust System Technology copyright 2004, all rights reserved

Road
Program

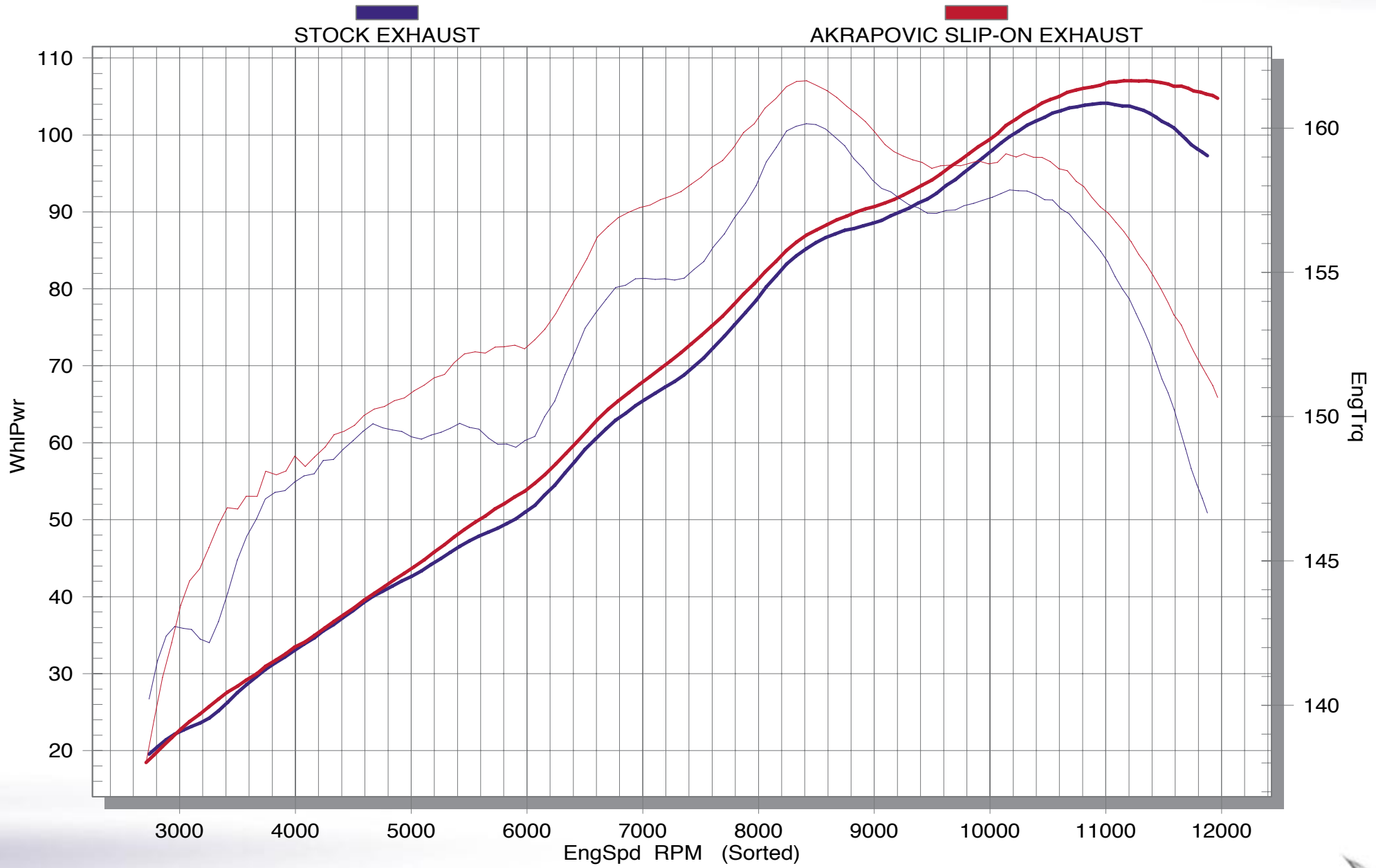
Akrapovic Slip-On SP Series Exhaust System for the Kawasaki Z 750 (2004)



Akrapovic Exhaust System Technology copyright 2004, all rights reserved

Road Program

Akrapovic Slip-On SP Series Exhaust System for the Kawasaki Z 750 (2004)



Road Program



Akrapovic Exhaust System Technology copyright 2004, all rights reserved