



Suzuki GSX-R 1000 (2005)

Slip-On Exhaust System

Akrapovic Slip-On Exhaust System

for the Suzuki GSX-R 1000 (2005)

Despite the fact that the Akrapovic SLIP-ON is a partial system and that it is a first-level exhaust system tuning component, it provides a major performance improvement for the Suzuki. The system is designed for riders who are looking for a combination of performance, quality, simple installation and affordability. Racing-oriented riders should check out our Racing and Evolution complete systems.

PERFORMANCE

Measurements of the Akrapovic SLIP-ON system on the SUZUKI GSX-R 1000 (without noise damper):

Power: the Akrapovic Slip-On works very well with the Suzuki engine. The power curve is linear, and from the added power from 4000 rpm on, it runs parallel to the stock curve with no drop-outs or fluctuations. Max. power of 166.7 HP is reached at 11700 rpm.

Torque: the torque curve reflects the same compatibility with the operation of the engine. The increase can be seen throughout the entire rpm range, so you get bags of torque to go along with the loads of power.

CONFIGURATION

The Akrapovic SLIP-ON system is composed of a conical titanium link pipe and muffler. The link pipe is attached to the stock header assembly and the muffler with sleeve joints. The joint with the header assembly is secured with a metal clamp and a spring, and two springs to attach the link pipe to the muffler. The muffler is attached to the frame with an Akrapovic carbon-fiber clamp. The inlet and outlet caps and inner perforation of the muffler are made entirely of titanium, and the outer sleeve is available in either titanium or carbon-fiber.

OPTIONS

The muffler outer sleeve is available in either titanium or carbon-fiber.

	PERFORMANCE		
	stock	AKRAPOVIC	max. increased power
max. rear wheel power HP / rpm (measured on SuperFlow Cycle Dyn)	162.6 / 11400	166.7 / 11700	6.9 / 12200

	CONFIGURATION		
	header tubes	collector	link pipe
material	-	-	TITANIUM
tube shape	-	-	CONICAL

interference crossover tubes	-	lambda sensor	-
header tube inner sleeves	-	header tube flanges	-
header tubes - collector connection	-	collector / header tube - link pipe connection	SLEEVE JOINT + METAL CLAMP+ SILICON SHIELDED SPRINGS
link pipe - muffler connection	SLEEVE JOINT + SILICON SHIELDED SPRINGS	muffler inlet cap /outlet cap	TITANIUM / TITANIUM
muffler metal interior	TITANIUM	muffler outer sleeve	TITANIUM / CARBON-FIBER
muffler clamp	CARBON-FIBER ROAD	muffler bracket	-
noise damper	-	heat shield	-

OPTIONS				
link pipe	noise damper	muffler outer sleeve	muffler bracket	heat shield
-	-	TITANIUM / CARBON-FIBER	-	-

	ADDITIONAL DATA				
	stock	AKRAPOVIC		difference	
		S.S. link pipe	TITANIUM link pipe	stock - S.S.	stock - titanium
weight comparison (kg)	4.88	-	2.07	-	2.81

noise measurements (dB / rpm)	stock	AKRAPOVIC
	98.6 / 5500	102.2 / 5500 (without noise damper)
possibility of periodic service without removing A.E.S.	oil	oil filter
	YES	YES
legal for street use	-	

Technical specifications of Akrapovic exhaust systems and related products subject to change without notice.

Product code: 104239 (S-S10SO2T-C)
104240 (S-S10SO2T-T)

Akrapovic Slip-On Exhaust System for the Suzuki GSX-R 1000 (2005)



Akrapovic Exhaust System Technology copyright 2005, all rights reserved

Road Program



ANTI-SEIZING GREASE



ANTI-SEIZE LEAD-FREE
COPPER PASTE



CARBON-FIBER
MUFFLER CLAMP

Product code: 104239 (S-S10SO2T-C)
104240 (S-S10SO2T-T)

Akrapovic Slip-On Exhaust System for the Suzuki GSX-R 1000 (2005)



Akrapovic Exhaust System Technology copyright 2005, all rights reserved

Road
Program

Product code: 104239 (S-S10SO2T-C)
104240 (S-S10SO2T-T)



Akrapovic Slip-On Exhaust System for the Suzuki GSX-R 1000 (2005)



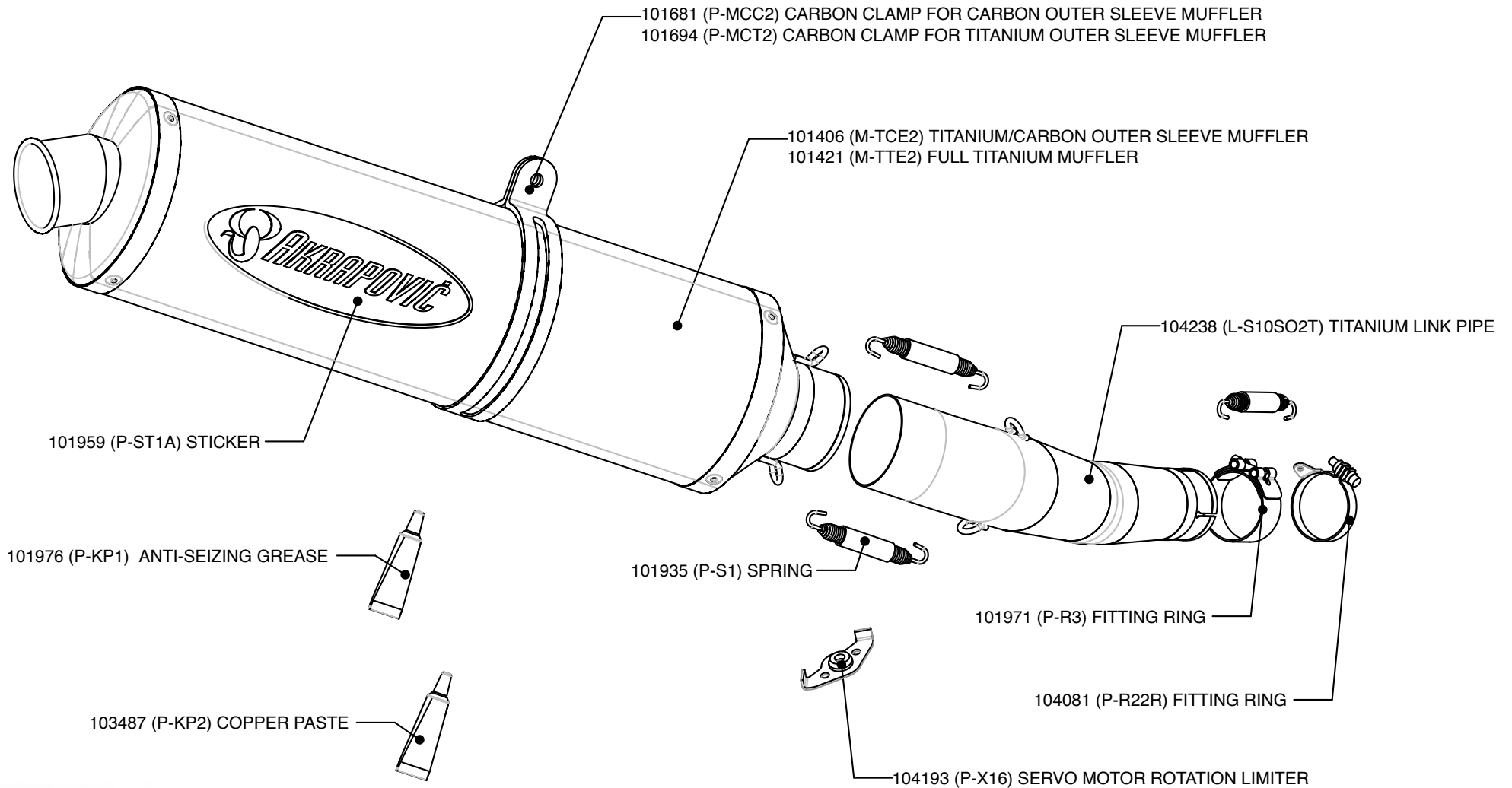
Akrapovic Exhaust System Technology copyright 2005, all rights reserved

Road Program

Product code: 104239 (S-S10SO2T-C)
104240 (S-S10SO2T-T)

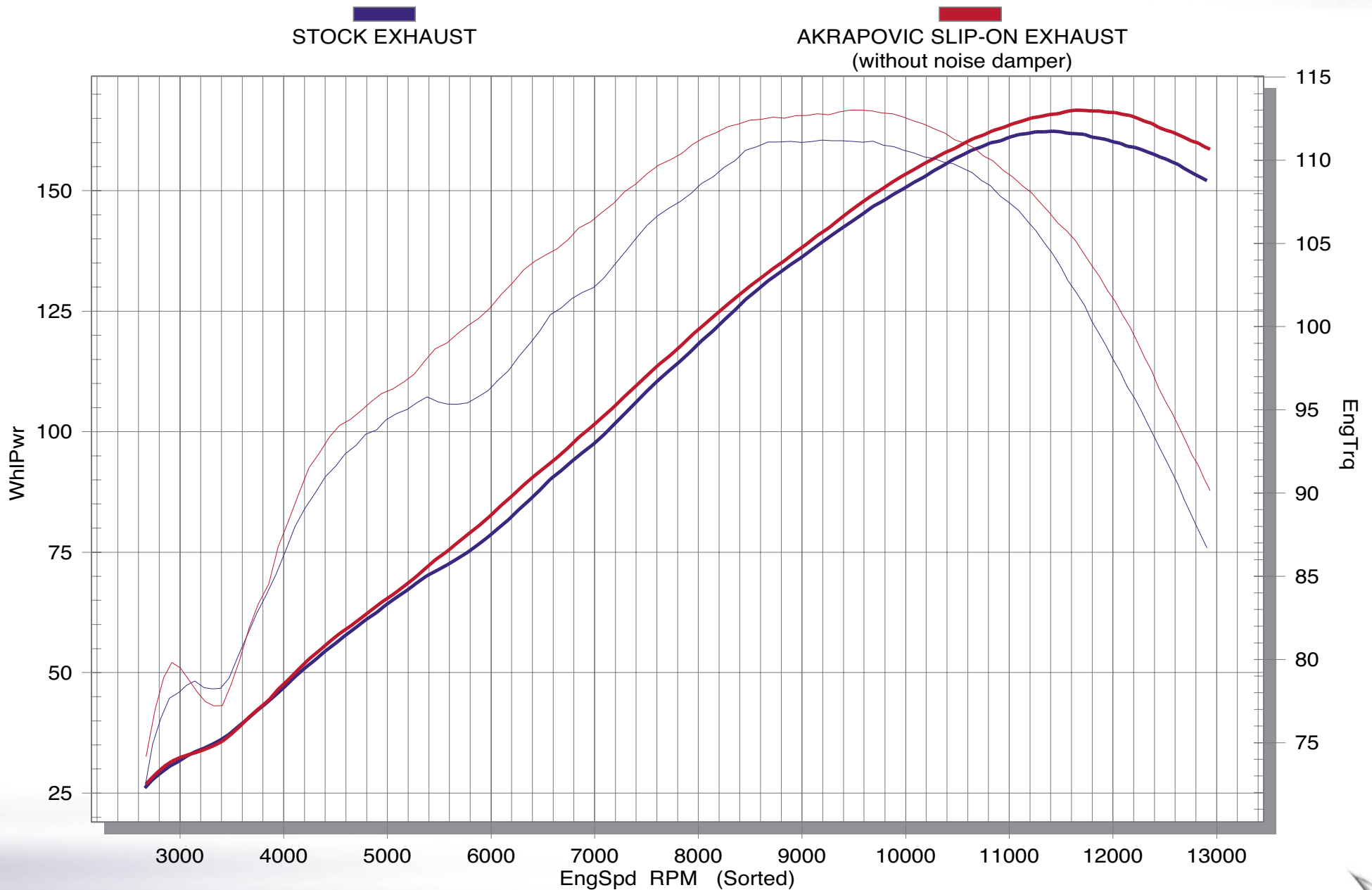
Akrapovic Slip-On Exhaust System

for the Suzuki GSX-R 1000 (2005)



Product code: 104239 (S-S10SO2T-C)
 104240 (S-S10SO2T-T)

Akrapovic Slip-On Exhaust System for the Suzuki GSX-R 1000 (2005)



Road Program

Product code: 104239 (S-S10SO2T-C)
104240 (S-S10SO2T-T)

