



**SUZUKI BANDIT GSF 1250**

**(2007)**

**SLIP-ON EXHAUST SYSTEM (HOMOLOGATED)**

[www.akrapovic.net](http://www.akrapovic.net)

Akrapovic SLIP-ON is a first-level exhaust system tuning component. It provides a significant performance improvement for the Suzuki Bandit. The system is designed for riders who are looking for a combination of performance, high quality, simple installation and affordability. With Akrapovic SLIP-ON Hexagonal muffler system you will also benefit from weight savings and deeper and sportier sound. SLIP-ON system is homologated and approved for street use.

### PERFORMANCE

Measurements of the Akrapovic SLIP-ON system on the SUZUKI BANDIT GSF 1250 (without noise damper):

Power & Torque: The power curve with Akrapovic exhaust system is much more linear, from bottom to top of the power curve. Max. power of 105.2 HP is reached at 8700 rpm. The torque curve reflects the same compatibility with the operation of the engine. The increase can be seen throughout the entire rpm range, so you get bags of torque to go along with the loads of power. Biggest power gain of 5.7 HP is at 6900 rpm.

### CONFIGURATION

The Akrapovic SLIP-ON system is composed of a cylindrical stainless steel or titanium link pipe and muffler. The link pipe is attached to the stock header assembly with sleeve joints and metal clamp. The Link pipe and Muffler is welded. The muffler is attached to the frame with an Akrapovic carbon-fiber clamp. The inlet caps and inner perforation of the muffler are made entirely of titanium, and the outer sleeve is available in either titanium or carbon-fiber. Outlet cap is available only in carbon fiber.

Technical specifications of Akrapovic exhaust systems and related products subject to change without notice.

	PERFORMANCE		
	stock	AKRAPOVIC	max. increased power
max. rear wheel power HP / rpm <small>(measured on Dynojet ATV)</small>	100.5 / 7650	105.2 / 8700	5.7 / 6900

	CONFIGURATION		
	header tubes	collector	link pipe
material	-	-	TITANIUM
tube shape	-	-	CYLINDRICAL

interference crossover tubes	-	lambda sensor	NO
header tube inner sleeves	-	header tube flanges	-
header tubes - collector connection	-	collector / header tube - link pipe connection	SLEEVE JOINT + METAL CLAMP
link pipe - muffler connection	WELDED	muffler inlet cap / outlet cap	TITANIUM / CARBON-FIBER
muffler metal interior	TITANIUM	muffler outer sleeve	TITANIUM / CARBON-FIBER
muffler clamp	CARBON-FIBER	muffler bracket	-
muffler insert	EU	YES	heat shield
	US	-	catalytic converter
			NO

	ADDITIONAL DATA				
	stock	AKRAPOVIC		difference	
weight comparison (kg)	15.1	S.S. link pipe	TITANIUM link pipe	stock - S.S.	stock - titanium
		-	5.44	-	9.66
noise measurements (dB / rpm)	stock		AKRAPOVIC		
	84 / 3750		91.5 / 3750		
possibility of periodic service without removing A.E.S.	oil		oil filter		
	YES		YES		
legal for street use	NO				



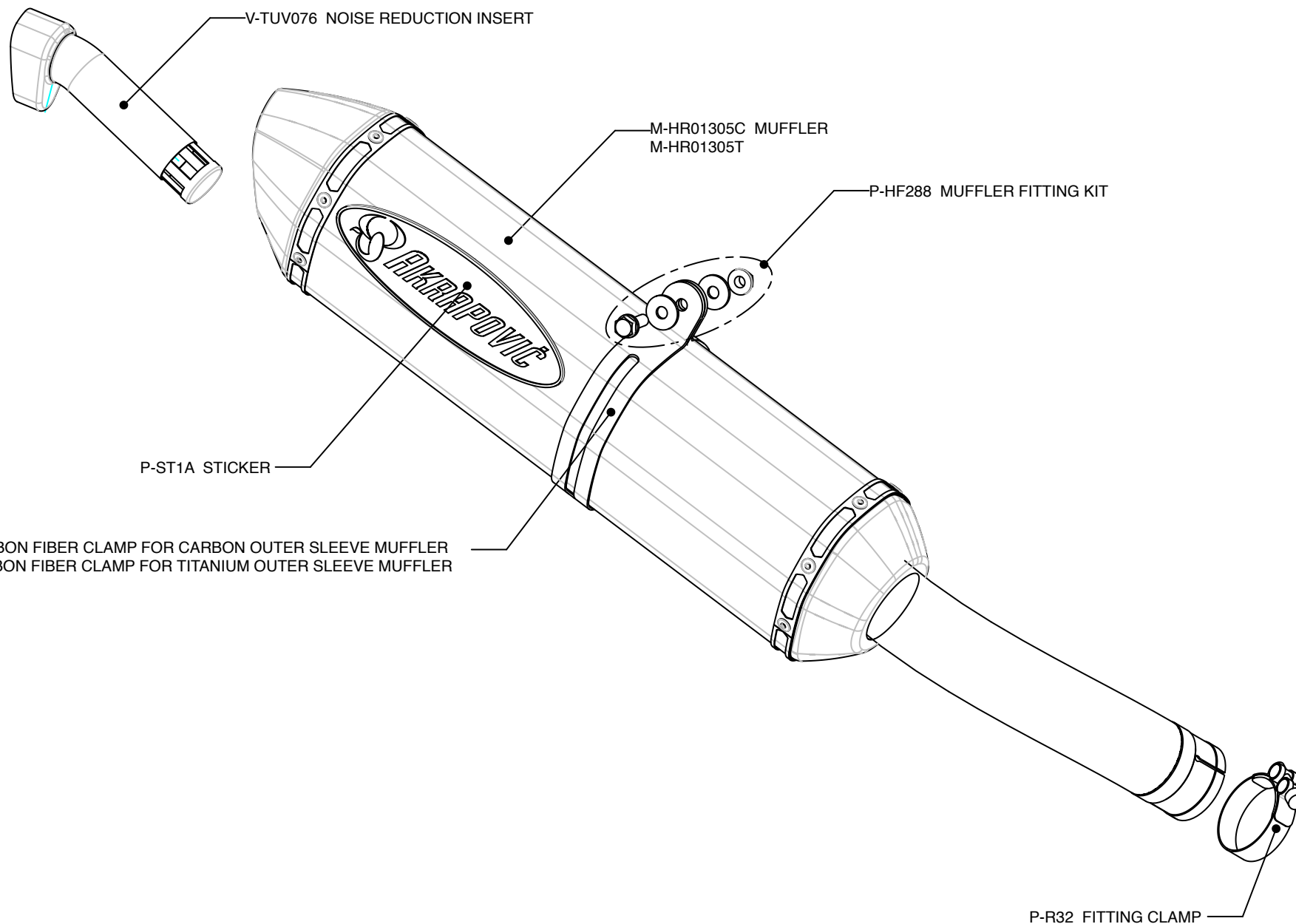
Product code: S-S12SO3-HRC  
S-S12SO3-HRT



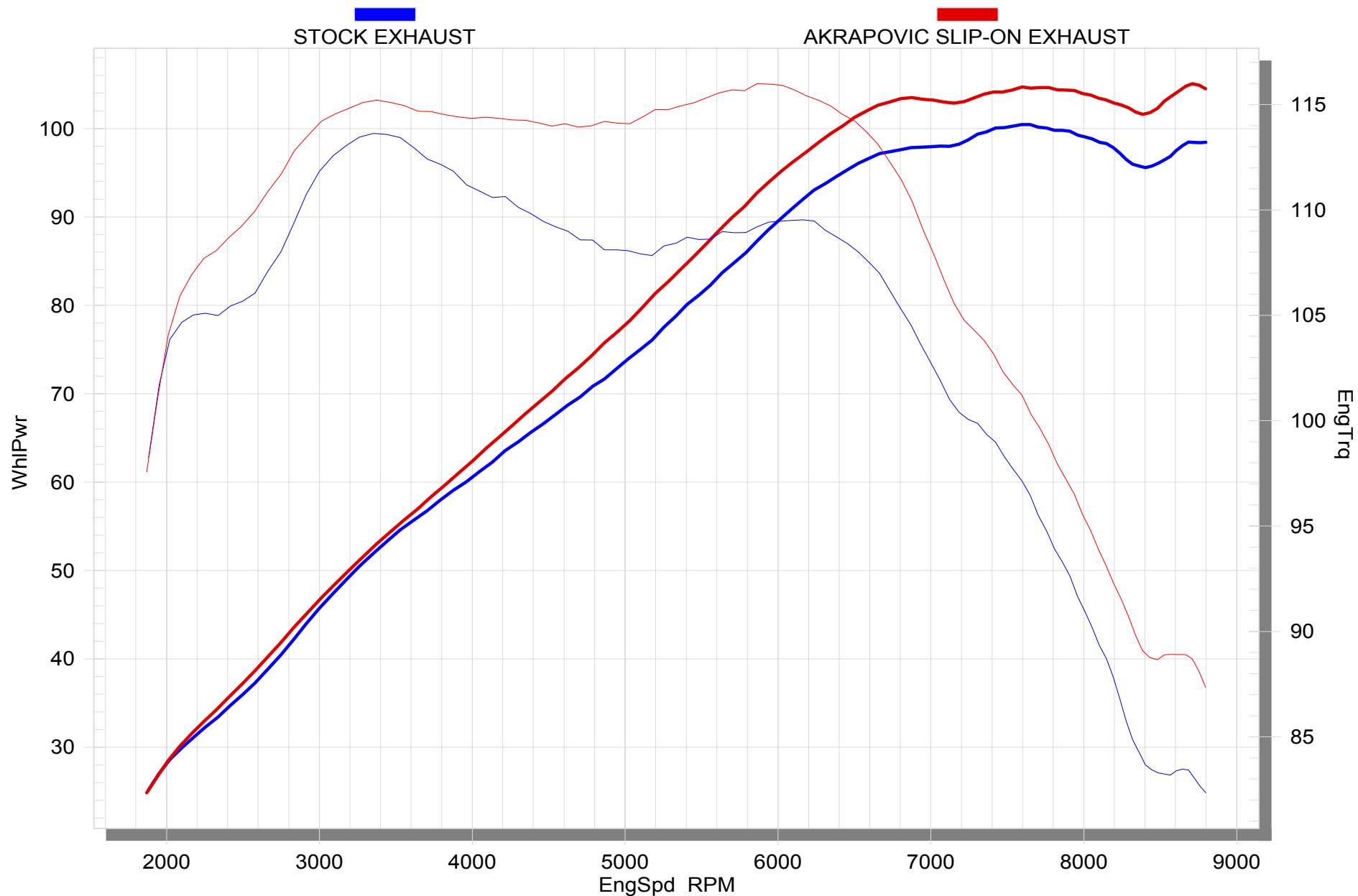
Product code: S-S12SO3-HRC  
S-S12SO3-HRT



Product code: S-S12SO3-HRC  
S-S12SO3-HRT



Product code: S-S12SO3-HRC  
S-S12SO3-HRT



Product code: S-S12SO3-HRC  
S-S12SO3-HRT