



Suzuki SV650, SV650 S (2003)

Sport Production Exhaust System

# Akrapovic Sport Production Exhaust System

for the Suzuki SV650, SV650 S (2003)

The smaller version of the popular Suzuki twin. This visually changed model is sharper looking both in its frame and its half-cowling. The slightly upgraded 650 cc twin for 2003 will more than satisfy all the expectations of those who want twin performance in a smaller package.

## GOAL

The SV family is already well-represented at Akrapovic. The 1000 cc model has already visited our R&D department; now it's time for the 650, for which we have developed an Akrapovic SPORT PRODUCTION model complete exhaust system. The disposition of the motorcycle is clear – a sports bike which can easily be adapted to relaxed everyday riding. This was our guideline for developing this system.

## ABOUT AKRAPOVIC SPORT PRODUCTION SYSTEMS

The Akrapovic SPORT PRODUCTION 2-1 exhaust system from the Akrapovic road program is one of our series of complete exhaust systems. This means that it entirely replaces the stock exhaust.

One of the features of the SPORT PRODUCTION systems is that the header tubes are cylindrical, while the link pipe can be conical, as it is in the case of this system. All tubes are constructed of high-quality stainless steel whose high polish is especially attractive when mounted on a naked motorcycle.

The component parts of the system are connected using free-floating joints held together with high-quality silicon-shielded tensioning springs.

The muffler is the familiar Akrapovic oval. The composition of the muffler is also well-known. The interior and the front and rear rosettes are made entirely of titanium, while the outer sleeve is available in either the refined satin sheen of titanium or the checkered racing pattern of carbon-fiber. The choice is yours; both versions look great on the bike,

and the performance and the sound are identical in both cases. The muffler is attached to the bike using the Akrapovic carbon-fiber clamp, which is perfectly suited to its task.

## Measurements of the SPORT PRODUCTION system for the Suzuki SV 650 S:

### • power:

the Akrapovic SPORT PRODUCTION exhaust system is an excellent match for the SV's engine and setup, as it offers increased power both in the low and the high end of the rpm range. This means that the system is suited both for sports riding and more relaxed everyday riding, and will respond well in either case. The maximum increased horsepower is found right in the middle of the range, where it amounts to 4.9 HP. At 8935 rpm the twin puts out a hefty 72.7 HP.

### • torque:

the torque curve is where the SPORT PRODUCTION system really shows its colors. The increase at both the low end and the high end is more than substantial, giving you plenty of torque throughout the rpm range, no matter how much you open the throttle. This means comfortable riding without having to constantly adjust to the gear ratios.

In addition to the increase in power and torque, the Akrapovic SPORT PRODUCTION exhaust system also offers you savings in weight. In comparison to the stock system you will gain a more than 50% weight savings, i.e. 5.22 kg.

Last but not least, the Akrapovic SPORT PRODUCTION system will give your Suzuki a much bigger sound. Your Japanese twin will finally be able to breathe freely, and sound like it was meant to.

	stock	AKRAPOVIC		difference	
		S.S.	titanium	stock - S.S.	stock - titanium
weight comparison	8.27 kg	3.50 kg	-	5.22 kg	-
max. rear wheel power	70.7 / 8860 RPM	72.7 HP / 8935 RPM		4.9 HP / 5600 RPM*	
noise measurement	90 db / 4500 RPM	99.5db / 4500 RPM		9.5 db / 4500 RPM	
legal for street use		NO			

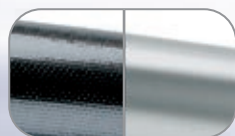
\*MAXIMUM MEASURED POWER DIFFERENCE

Technical specifications of Akrapovic exhaust systems and related products subject to change without notice.

# Akrapovic Sport Production Exhaust System for the Suzuki SV650, SV650 S (2003)



Road  
Program



The outer sleeve is available in carbon-fiber or titanium



CARBON-FIBER  
MUFFLER CLAMP

Product code: S-S65S2-T, S-S65S2-C

# Akrapovic Sport Production Exhaust System for the Suzuki SV650, SV650 S (2003)

Akrapovic Exhaust System Technology copyright 2003, all rights reserved



Road  
Program

# Akrapovic Sport Production Exhaust System for the Suzuki SV650, SV650 S (2003)



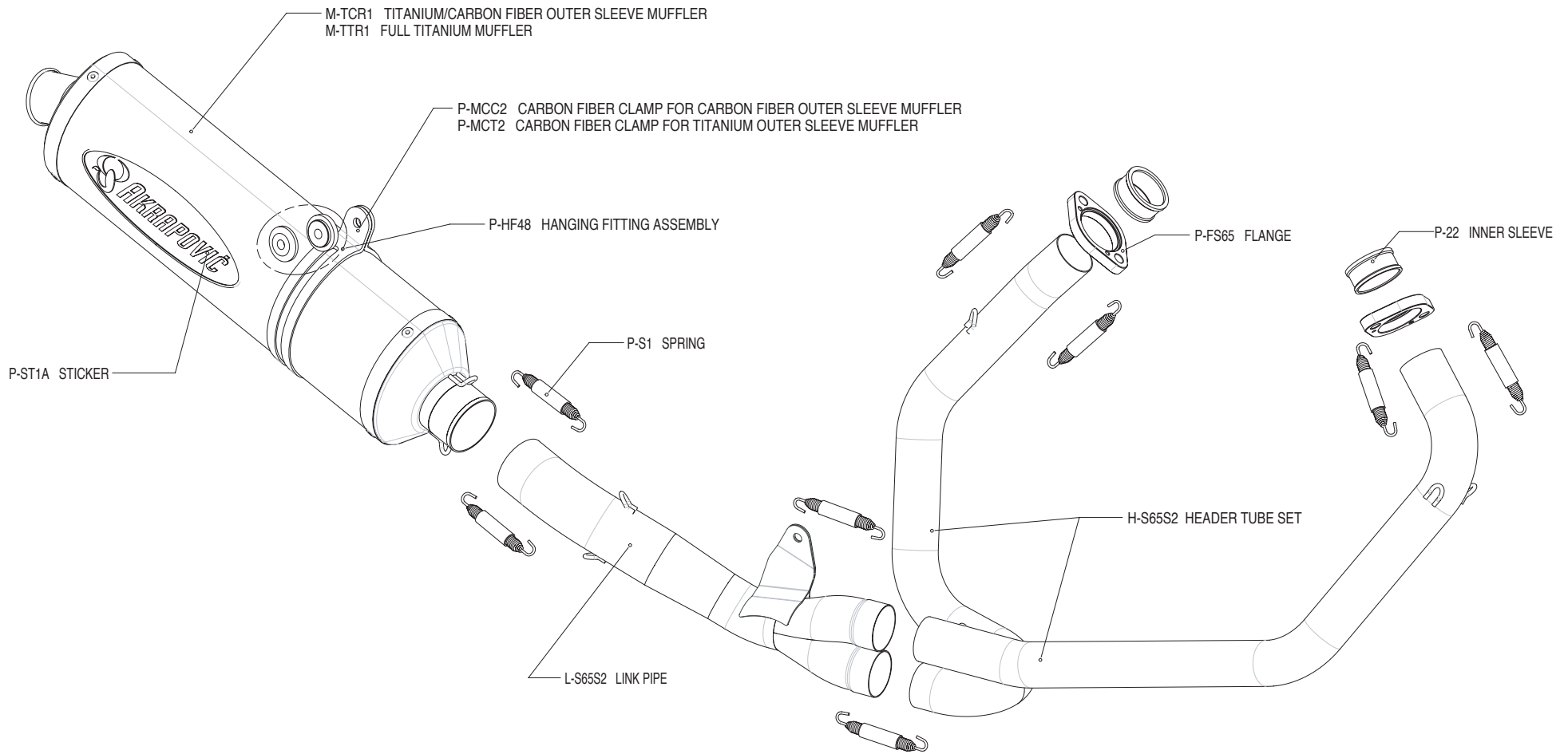
Akrapovic Exhaust System Technology copyright 2003, all rights reserved

Road  
Program



# Akrapovic Sport Production Exhaust System

for the Suzuki SV650, SV650 S (2003)



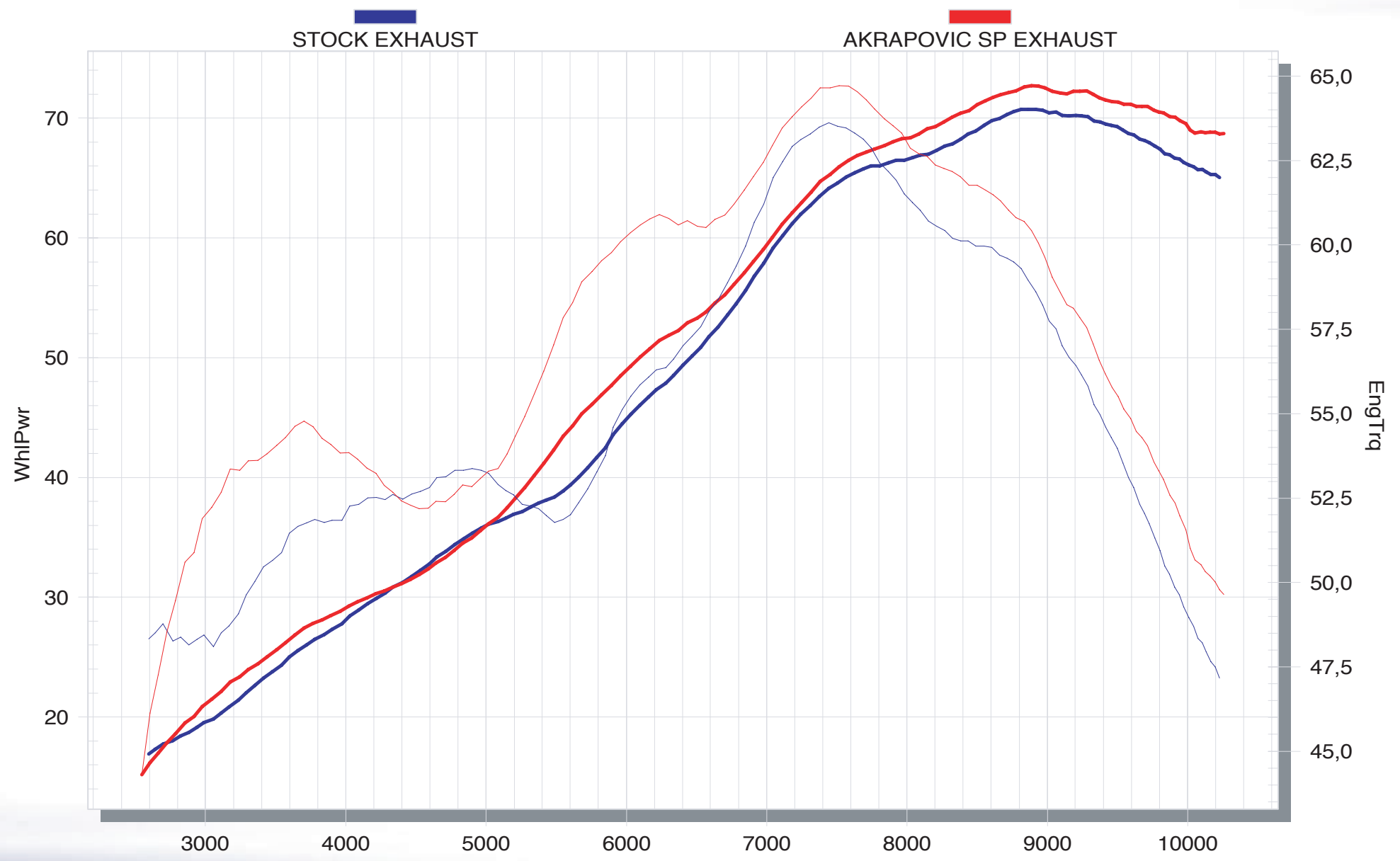
Akrapovic Exhaust System Technology copyright 2003, all rights reserved

Road Program



# Akrapovic Sport Production Exhaust System

for the Suzuki SV650, SV650 S (2003)



Road Program

Akrapovic Exhaust System Technology copyright 2003, all rights reserved

